

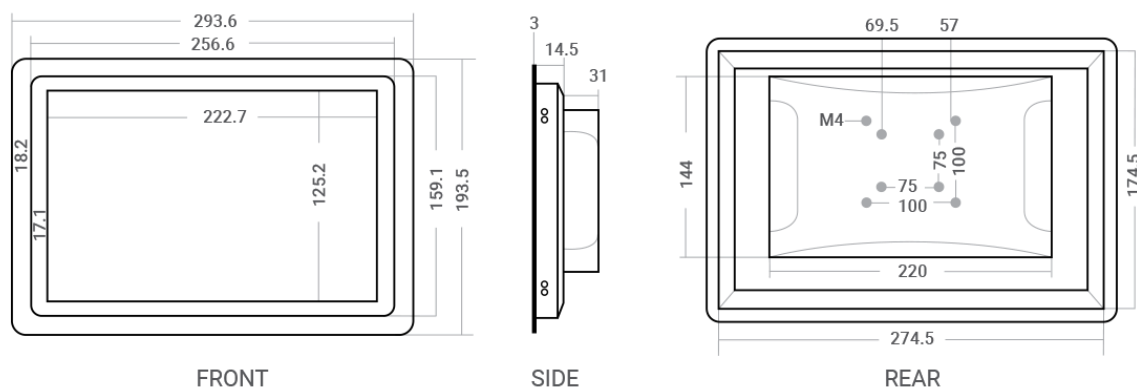
# iSMA-D-PD10C-B1



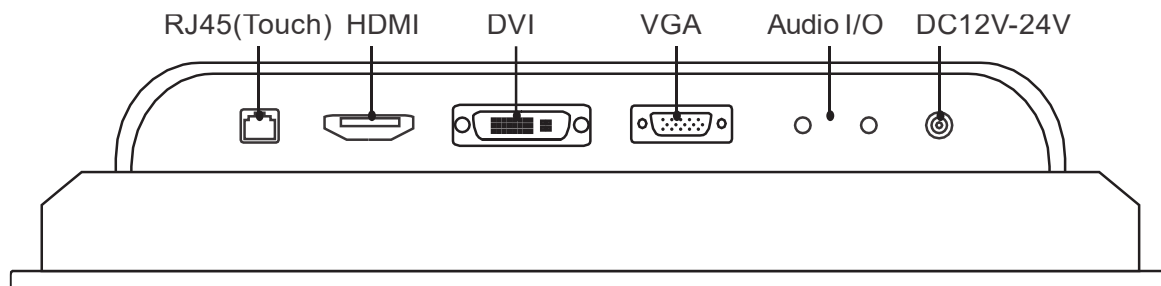
version 1.2

SPECIFICATION	
Power supply	AC 110-240 V, 50/60 Hz
Panel power input	DC 12 V or 24 V
Power supply adapter	EU, UK or US
Interface	HDMI, VGA, DVI, I/O Audio, RJ45-USB for touch input
Display	10,1", 10-point capacitive screen
Aspect Ratio	16:9
Resolution	For iSMA-B-MAC36NL 1280x720 For Panel 1366x768
Ingress Protection Rating	IP65 - for front panel
Temperature	Operating: -10°C to +60°C (14°F to 140°F) Storage -10°C to +60°C (14°F to 140°F)
Operation humidity	10 to 80%
Connectors	Separable, max 2.5 mm <sup>2</sup> (18 – 12 AWG)
Dimension	293,6x193,6x48,5 mm (11.560x7.622x1.909 in)
Response time	5 ms
Housing material	Aluminum alloy enclosure, color black, Bezel thickness 3 mm

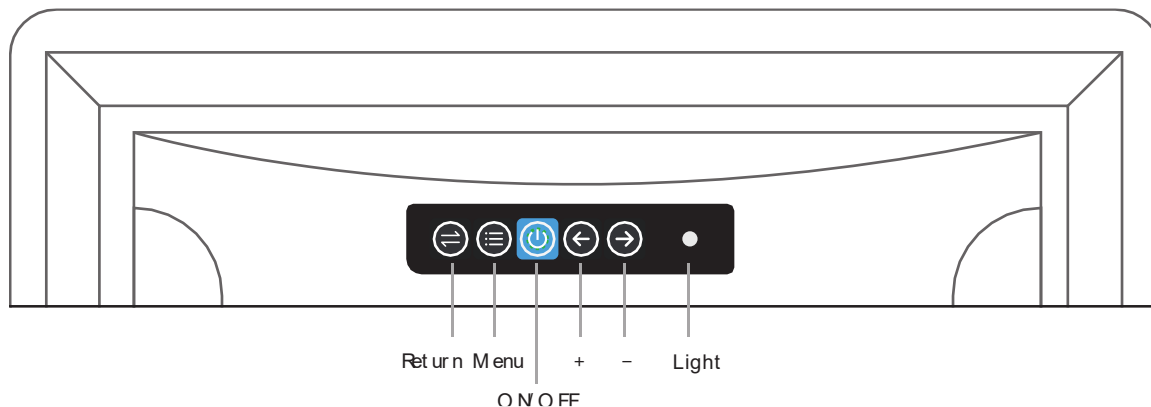
## DIMENSION



## INTERFACE

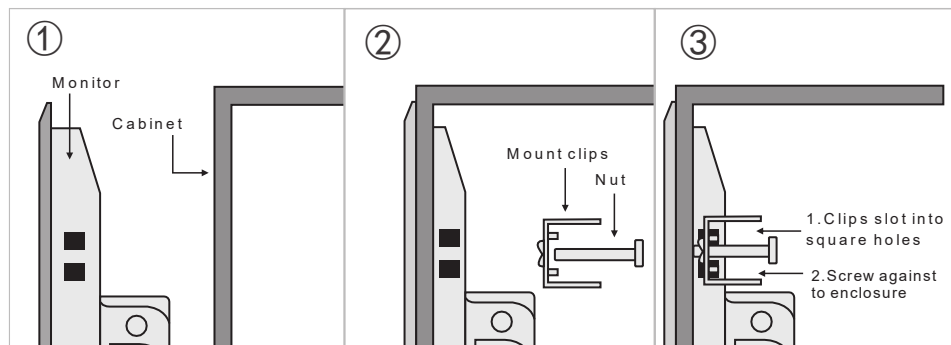


## REAR NAVIGATION BUTTONS



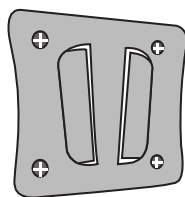


## SNAP JOINT INSTALLATION



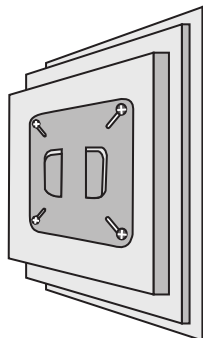
## WALL-MOUNT INSTALLATION

①



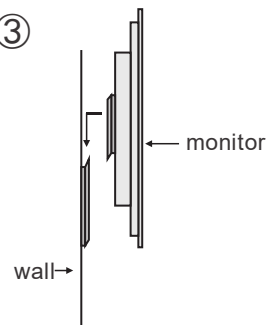
A bracket installed on the wall;

②



B bracket installed on the rear size of the monitor;

③



Insert the B bracket into the A bracket to finish the installation;



### WARNING



- Note, an incorrect wiring of this product can damage it and lead to other hazards. Make sure the product has been correctly wired before turning the power ON.
- Before wiring, or removing/mounting the product, be sure to turn the power OFF. Failure to do so might cause electric shock.
- Do not touch electrically charged parts such as the power terminals. Doing so might cause electric shock.
- Do not disassemble the product. Doing so might cause electric shock or faulty operation.
- Use the product within the operating ranges recommended in the specification (temperature, humidity, voltage, shock, mounting direction, atmosphere etc.). Failure to do so might cause fire or faulty operation.
- Firmly tighten the wires to the terminal. Insufficient tightening of the wires to the terminal might cause fire.
- Do not place the monitor on the unstable place.
- Do not exposed the monitor directly in the sunlight and other heat sources.
- Do not step on the power cord or make the power cord entwined.
- Clean the monitor with dry soft fabric (volatile matter not allowed).
- Do not contact with or be exposed to inappropriate temperatures, solvents, acid, water or moisture.
- Avoid the fragmentation, corrosion and any other damage to products or components (such as shell, LCD/LED panel, port, circuits etc.) caused by insect and mouse or any other things inserting.
- Please place it in a suitable location, such as mounted on the wall, hanging from the ceiling, and install it under the guidance of the professional.