



## Overview

The FieldServer BACnet Router offers a complete BACnet Internetworking solution for BACnet/IP, BACnet Ethernet, and BACnet MS/TP networks.

This is the first standalone BACnet Router that has been certified by BTL to ensure the highest standard for BACnet integration.

The FieldServer BACnet Router has two RS-485 ports enabling up to 64 BACnet MS/TP devices to be connected to it without the use of additional line drivers. Relative to a single port router, the dual port router halves device response time by distributing devices over the two RS-485 ports.

The FieldServer BACnet Router has an easy one-page configuration, greatly simplifying the installation process. Included in the BACnet Router the BACnet Explorer, allows the integrator to push a button and discover all the BACnet devices connected to the router, greatly simplifying the commissioning process and troubleshooting the BACnet network.

## BACnet Router Features and Benefits

### Multiple BACnet Routing Connections

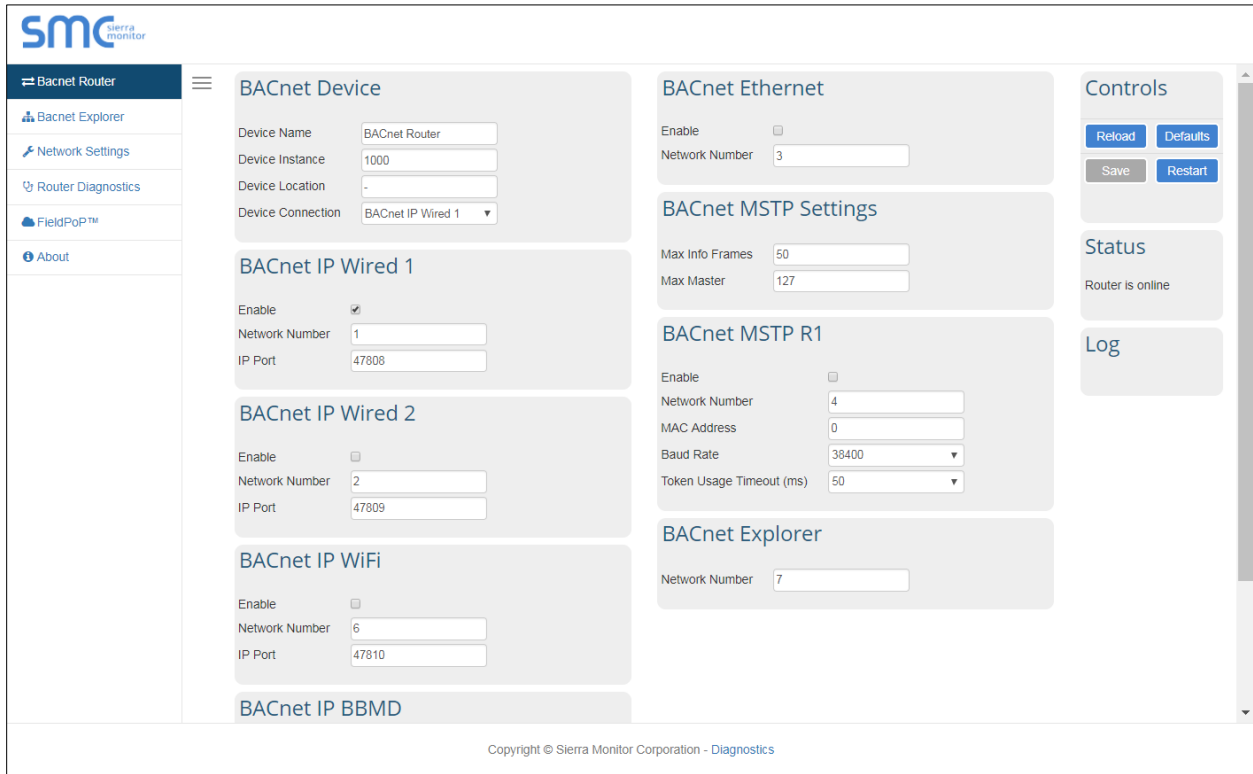
- BACnet/IP & BACnet MS/TP
- BACnet MS/TP & BACnet Ethernet
- BACnet MS/TP & BACnet MS/TP
- BACnet/IP & BACnet/IP
- BACnet/IP & BACnet Ethernet

### Ease of Use

- BACnet Explorer: discovers devices connected to the FieldServer BACnet Router.
- BACnet Broadcast Management Device (BBMD) for a connection between different subnets, up to 50 devices supported on the Broadcast Distribution Table (BDT).
- Web Based configuration with no additional software needed for configuration.
- NAT support with secondary BACnet/IP connection for routing between public and private IP networks.
- Foreign Device Registration (FDR), exposing up to 147 devices details on different subnets.
- **SMC Cloud** registration connects your devices to the cloud, allowing secure remote access for diagnostics, monitoring, alarming and configuration.
- On-board diagnostics allow easy troubleshooting for both serial and Ethernet communications.

### Ease of Installation

- MDIX to use any Ethernet cable for commissioning and installation.
- DHCP to automatically obtain the IP setting from the network.
- Software “ToolBox” to find and diagnose all FieldServer BACnet routers on the network.
- Wide range of input power requirements, AC or DC.



**Hardware Specifications \***

**Communication**

**Serial (Galvanic Isolation):**

2 x RS-485

**Baud:** 9600, 19200, 38400, 57600, 76800

**Ethernet**

10/100BaseT

MDIX

DHCP

**Environment**

**Operating Temperature:** -20 to 70°C (-4 to 158°F)

**Relative Humidity:** 10-95% RH non-condensing

**Other**

Web configuration

On-board diagnostics

DIN rail mount included

**Construction**

**Dimensions (HxWxD)**

4 x 1.1 x 2.7 in (10.16 x 2.8 x 6.8cm)

**Weight:** 0.4 lbs (0.2 Kg)

**Power Requirements**

**Input:** 24VAC 0.125A

12-24VDC 0.25A @12 VDC

**Max Power:** 3W

**Approvals**

**CE and FCC** class B & C part 15

**BTL Marked**

**UL 60950-1 and CAN/CSA C22.2**

**IC Canada**

**RoHS and WEEE compliant**



\* Specifications subject to change without notice

**Ordering Information**

The FieldServer BACnet Router is available in the following hardware configurations:

- FS–Router–BAC2 (2 Serial Ports)

**Options**

The Accessory Kit consists of a power supply, Ethernet cable, screwdriver and a USB flash drive that includes all manuals, data sheets, notes and the discovery tool.

- FS-8915-38-QS Accessory Kit, 110/220V